



The XL9U is an ideal choice for education, business and government markets

## A Feature Rich Portable Projector with Bright and Vivid Images

The XL9U is a lightweight native XGA (1024x768), 2000 ANSI lumens LCD projector. It includes flexible connectivity options with two RGB15-pin inputs, RCA and S-Video connectivity, as well as a RGB 15-pin monitor loop through and both audio in and out stereo mini-jacks. It also includes digital keystone correction, user programmable splash screens, and both 3D Color Uniformity correction and Natural Color Matrix™ for brilliant images.

- LCD Technology
- 2000 ANSI Lumens and 350:1 Contrast Ratio
- Native XGA Resolution (1024x 768)
- Exclusive Natural Color Matrix™
- User Programmable Splash Screen
- Password Menu Security Lock
- Up to a 5000 hour lamp life (low mode)

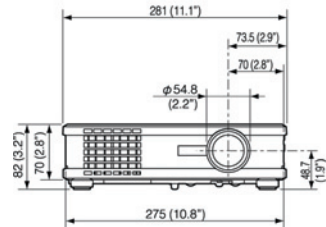
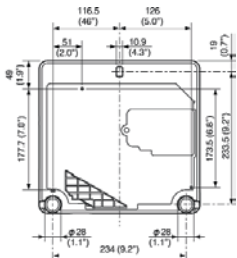
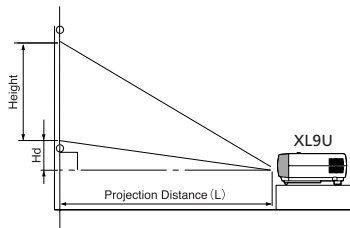
# XL9U

## XGA PROJECTOR



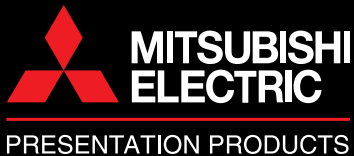
SCREEN				DISTANCE FROM SCREEN (L)				Hd	
Diagonal Size	Width	Height		Max.Zoom	Min.Zoom		inch	cm	
inch	cm	inch	cm	inch	m	inch	m	inch	
40	102	32	81	47	1.2	56	1.4	2.2	5
60	152	48	122	36	91	71	1.8	85	2.2
80	203	64	163	48	122	95	2.4	114	2.9
100	254	80	203	60	152	119	3.0	143	3.6
150	381	120	305	90	229	178	4.5	215	5.5
200	508	160	406	120	305	238	6.0	287	7.3
250	635	200	508	150	381	298	7.6	359	9.1
300	762	240	610	180	457	358	9.1	430	11.0

Unit measured in inches. \*Hd is distance from lens axis to image bottom.



Unit measured in millimeters (mm)

<b>DISPLAY TECHNOLOGY</b>	0.6" 3-LCD (with Micro Lens)
<b>RESOLUTION</b>	1024 x 768 (Total 786,432 pixels) 600 Video lines
<b>BRIGHTNESS</b>	2000 ANSI Lumens
<b>CONTRAST RATIO</b>	350 : 1 (on/off)
<b>ZOOM/FOCUS</b>	Manual Focus & Zoom Lens (Zoom Ratio 1.2 : 1)
<b>PROJECTION LENS</b>	F=19-22mm (3.0-3.6m@100")
<b>THROW RATIO</b>	1.5 - 1.8
<b>OFF SET AXIS</b>	10 up : 1 down (no variable lens shift)
<b>PICTURE SIZE</b>	40-300 inches diagonal
<b>SOURCE LAMP</b>	200W (Shut Off Time 2000Hrs) with Low Mode (160W:Shut Off Time 5000Hrs)
<b>PC COMPATIBILITY</b>	Resolution ; 640 x 480 (Expand) - 1024 x 768 (Real) - 1280 x 1024 (Compress) Sync on Green available
<b>VIDEO COMPATIBILITY</b>	NTSC / NTSC 4.43 / PAL including PAL-M, N) / SECAM / PAL-60 Component Video ; 480i/p(525i/p), 576i/p(625i/p), 720p(750p 50/60Hz), 1080i(1125i 50/60Hz), SCART (RGB + 1V sync)
<b>INPUT TERMINALS</b>	RGB: D-Sub 15 pin x 2, Audio: Stereo mini jack (ø 3.5 mm) x 1, Video: RCA x 1 + S-VIDEO x 1
<b>OUTPUT TERMINAL</b>	RGB: D-sub 15-pin x1, Audio: Stereo mini jack (ø 3.5mm) x 1.DC Out: 5V 1.5A (Max)
<b>COMMUNICATION TERMINAL</b>	RS-232C ; 8pin x 1 (Direct command is available.); USB for Mouse Cursor Control (with Optional Remote unit)
<b>SCANNING RATE</b>	[H] 15 - 100 kHz, [V] 50 - 120 Hz, [Dot Clock] max.140 MHz
<b>AUDIO SPEAKER</b>	2 W Mono
<b>HEIGHT ADJUSTER</b>	One Push Front leg ( 0 - 7 degree variable )
<b>HAND REMOTE UNIT</b>	1) Projector fully control, 2) USB Mouse Cursor Control with Optional Remote unit
<b>POWER CONSUMPTION</b>	280W / 2.9A
<b>DIMENSION</b>	10.3" x 10.4" x 3.4" (275 x 70 x 261 mm) (W x H x D)
<b>WEIGHT</b>	5.9 lbs. (2.7 kg.)
<b>POWER REQUIREMENTS</b>	AC 100 - 240 V, 50/60Hz
<b>FAN NOISE</b>	39dBA (Low mode: 34dBA)
<b>SUPPLIED ACCESSORIES</b>	<ul style="list-style-type: none"> <li>• AC Power Cable</li> <li>• RGB cable</li> <li>• RS-232C cable</li> <li>• Remote unit ( With Battery )</li> <li>• Soft Carrying Case</li> <li>• User Manual CD</li> <li>• Safety Manual</li> </ul>
<b>OPTIONAL ACCESSORIES</b>	Replacement Lamp (VLT-SL6LP), Learning Remote Control (R-SC1), Hard Shell Rolling Case (XL8-ATAC), Ceiling Mount (PROJ-UCM), Soft Carrying Case (XL1-SSCC)
<b>WARRANTY</b>	3-Years Parts and Labor, 3-Years ERA, 90-days or 300 hours on lamp
<b>OUTSTANDING FEATURES</b>	<ul style="list-style-type: none"> <li>• Natural Color Matrix™</li> <li>• User selectable Gamma correction (Dynamic/Standard/Theater)</li> <li>• User programmable Splash screen</li> <li>• Digital Keystone Correction for Vertical</li> <li>• Video Line Doubler</li> <li>• 3D Color Uniformity correction</li> <li>• 3D Y/C digital comb filter and 3D noise reduction</li> <li>• sRGB specification mode</li> <li>• 10 languages On Screen Display</li> <li>• Expand Digital Zoom</li> <li>• Password Menu Lock</li> </ul>



**MITSUBISHI DIGITAL ELECTRONICS AMERICA, INC.**  
Presentation Products Division  
Toll Free: 888.307.0349  
Email: pppinfo@mdea.com  
[www.mitsubishi-presentations.com](http://www.mitsubishi-presentations.com)

**Canada**  
Mitsubishi Electric Sales Canada Inc.  
Information Technologies Group  
Phone: 905.475.7728  
[www.mitsubishielectric.ca](http://www.mitsubishielectric.ca)



©2006 Mitsubishi Digital Electronics America, Inc. Standard features, options and specifications subject to change without notice. The DLP™ logo and DLP™ medallion are trademarks of Texas Instruments. Microsoft, Windows, and the Windows logo are registered trademarks of Microsoft Corporation. Mac and the Mac logo are trademarks of Apple Computer, Inc, registered in the U.S. and other countries. All other trademarks are the property of their respective holders.  
\*The projector lamp contains mercury. Please dispose of properly.

PP6016-04/06-15M-LITXD430U/SD430U