

V16+/V4+/V2+

Video Disc and Show Controllers



For years, Alcorn McBride's V16 video disc and show controller has been the standard for laser disc control throughout the theme park industry. Now you can get an even more powerful controller, while still retaining full backward-compatibility with the V16, in the new V16+ or V4+ or V2+.

The V16+, V4+ and V2+ are far more than simple video disc controllers. Their power comes from Alcorn McBride's ScriptOS operating system. This easy-to-use programming language supports 256 simultaneously-running sequences of show events such as video player commands, relay closures, serial messages, time delays, or branching instructions.

You create your show's Script on any PC compatible computer by entering sequence data in an English-like script language, much the same way data is entered into a spreadsheet. The Script is then downloaded to the V16+, V4+ or V2+ through a standard RS-232C cable. Non-volatile EEPROM memory holds the show data permanently - until you decide to change it. Once the unit is programmed, the PC is no longer needed.

The V16+, V4+ and V2+ speak the native languages of Pioneer, Sony, and other video players, video switchers, VTRs, and CD players. They automatically process handshaking and retries in a manner completely transparent to the user. Custom messages are easy to enter too, so the V16+, V4+ and V2+ are capable of controlling virtually any serial device in existence! And with up to 16 serial ports, it's easy to accommodate large system architectures.

Other show events allow activation of relay closures, display of LCD messages, and access to external Alcorn McBride show control products for nearly unlimited input/output expendability. State variables, flags and conditional branching capabilities permit the implementation of extremely complex interactive control processes. And NTSC video sync assures absolute frame synchronization between multiple video players.

The V16+, V4+ and V2+ include optically-isolated inputs and discrete outputs for easy interface to pushbuttons, sensors, PLCs, operator control consoles, indicator lamps, valves, and solenoids. And a programmable LCD display lets you see exactly what your show is doing at any given moment. Front-panel pushbuttons emulate the external inputs for easy testing.

The V16+, V4+ and V2+ are the easiest to use, most powerful show controllers you can find. Call today for more information.

- Control complex shows and exhibits
- Multi-task up to 256 sequences
- Control almost any serial device
- Up To 16 RS-232 Serial Ports
- RS-485 and MIDI options
- Up to 16 Optically Isolated Inputs
- Up to 16 Discrete Outputs
- Up to 80 Character LCD Display
- NTSC Video Sync Input

**Alcorn
McBride
Inc.**

3300 S. Hiawassee
Building 105
Orlando, FL 32835
Tel (407) 296-5800
Fax (407) 296-5801
info@alcorn.com
www.alcorn.com

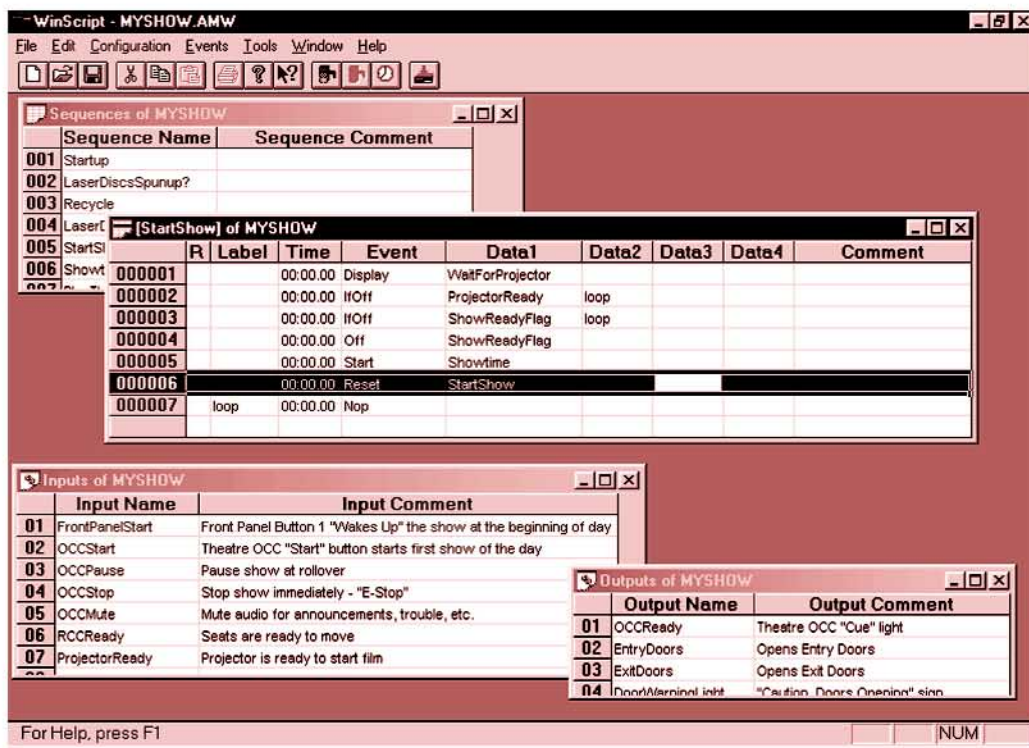
V16+/V4+/V2+

Video Disc and Show Controllers

V16+ Specifications

- Size & Weight:** Standard 2U rack mount (3.5" x 19" x 6.5"), 5lbs.
- Power:** 100 to 250 VAC, 50 to 60 Hz, 25 watts maximum.
UL listed Class 2 power adapter
- Environment:** 0 to 35 C (32 to 100 F)
0 to 90% relative humidity, non-condensing
- Front Panel:** 2x40 LCD Display
Power LED
Acknowledge LED
Error LED
16 Serial Activity LEDs
16 Input status LEDs
16 Output status LEDs
16 Pushbuttons
- Rear Panel:** Programming Port DB-9M
16 Serial Ports DB-9M
MIDI Input 5-pin DIN
MIDI Output 5-pin DIN
Discrete Inputs DB-37M
Discrete Outputs DB-37F
NTSC Sync BNC
Power 5-pin DIN
- Serial Ports:** RS-232C
300 baud - 38.4 Kbaud
7, 8 or 9 Data Bits
1 or 2 Stop Bits
All parity types
4 ports can be RS-485,
1 port can be MIDI
- Opto Inputs:** 5 to 24 VDC, 20mA maximum
Reconfigurable for pure contact-closure operation. Trigger latency < 1 frame.
- Relay Outputs:** Contact closures limited internally to 0.9 Amps with self-restoring polymer fuses.
- Show Memory:** 32 Kbyte EEPROM, expandable to 64 Kbytes. Nonvolatile, robust memory retains show data permanently with no battery backup required.
- Programming:** Any PC with Windows and one RS-232C serial port
- Documentation:** Owner's Manual, Application Notes
Sample Scripts and On-line Help

Specifications subject to change without notice



V4+ Specifications V2+ Specifications

Same as V16+ except
4 Serial Ports, 1 MIDI Port

Same as V16+ except
2 Serial Ports,
one may be MIDI
8 Discrete Inputs, 8 Buttons
8 Lamp Driver Outputs
24 K Max. EEPROM
Height 1.75"

**Alcorn
McBride
Inc.**

3300 S. Hiwassee
Building 105
Orlando, FL 32835
Tel (407) 296-5800
Fax (407) 296-5801
info@alcorn.com
www.alcorn.com

