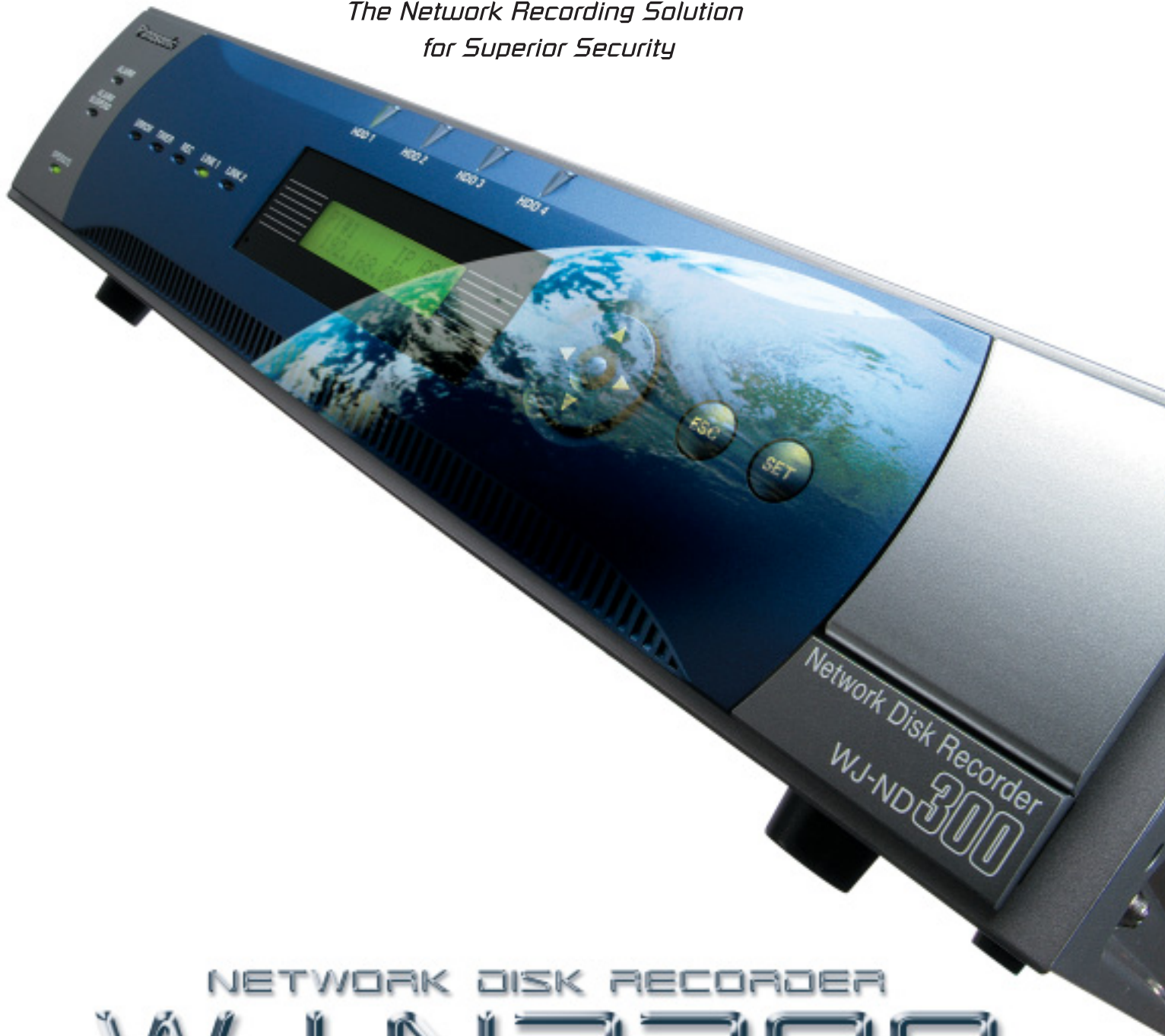


Panasonic
ideas for life

Network Disk Recorder
WJ-ND300

*The Network Recording Solution
for Superior Security*



NETWORK DISK RECORDER
WJ-ND300



Professional Surveillance

High Image Quality, High Frame Rate

Frame rate up to 960 ips/system for MPEG4*(4CIF) and up to 160 ips/system for JPEG (VGA). Supports full-motion live monitoring with MPEG4*(4CIF) at 30 ips x 32ch and JPEG (VGA) at 30 ips x 5ch.

Examples with maximum number of cameras

Image Compression	Image Size	Camera Number	ips / camera	Data Size / camera	ips / system
MPEG4*	4CIF	32 camera	30 ips	2 Mbps	960 ips
JPEG	VGA	16 camera	10 ips	4 Mbps	160 ips

*Firmware upgrade available in 1st Quarter 2006 to support MPEG4.

High Capacity Storage

The WJ-ND300 comes standard with 250GB of storage capacity. And can be configured with 3 additional hard disk drive for 1TB of storage. Additionally, with optional WJ-HDE300 Extension Units, a system can have up to 7TB of storage.

More Efficient Use of Image Storage Capacity

The Rate Control feature for MPEG4* permits storage of only Intra Frame data. Data Stream Control for JPEG reduces only recording frame rate.

A Wealth of Advanced Surveillance Features

To increase surveillance efficiency the WJ-ND300 recorder provides a full array of Schedule, Event, Emergency, and External Timer recording features, multiple parameter filters that provide accelerated search, and supports E-mail notification via FTP.

High-level User Management

The WJ-ND300 allows for registration of up to 32 users with individual user ID and password. Operations and access to cameras and functions can be restricted for each user. The host authorization function blocks access and operation from unregistered IP addresses for additional security.

Benefits of Combining Highly Reliable Surveillance and IP Network

Flexibility

Use of a LAN allows cameras to be placed wherever you like. It also permits live monitoring, search, playback and recording from a personal computer.

Scalability

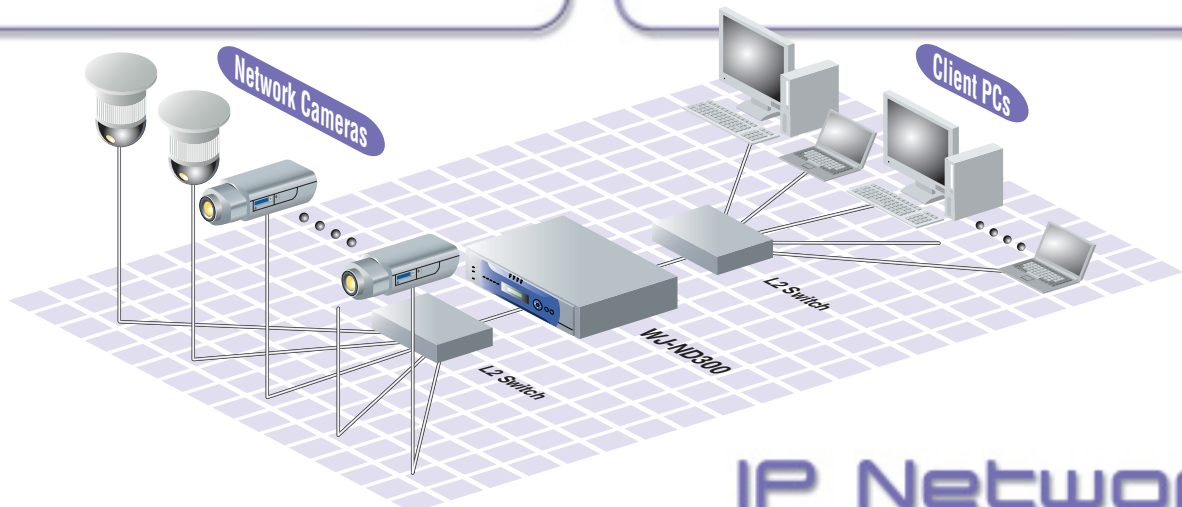
Use of an IP Network also reduces the number of steps required to add cameras and connect them to a hub. With our Optional WV-AS65 Management PC Software, systems can incorporate up to 100 WJ-ND300 Network Disk Recorders and up to 3,200 cameras.

Cost Efficiency

Because the WJ-ND300 utilized an existing network infrastructure, it sharply reduces costs in both time and money compared to systems that require dedicated cabling. The use of ordinary PCs eliminates the need for dedicated monitors. Plus, with hard disk storage, the burden of replacing video tapes or other consumables is also much lighter.

Built with the Future in Mind

As digital networks become a pervasive component of contemporary life, the potential for networked video surveillance systems is huge. As an example, the WJ-ND300 is designed to take full advantage of new networking advances and to simplify, the integration of other surveillance applications (i.e. access control system).



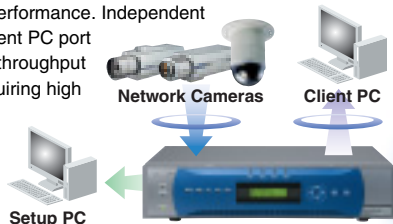
IP Network

The Disk Recorder for MPEG4*/JPEG Network Cameras

Panasonic introduces the new WJ-ND300 Network Disk Recorder with support for up to 32 Ethernet-linked network cameras. This multifunction disk recorder offers high speed throughput, combining high image quality with the high frame rate. Plus, it gives you the full, IP-addressing capabilities required to maximize both flexibility and scalability. The possibilities are endless. From systems that exploit existing networks to high-performance systems using dedicated networks, even hybrid systems using analog cameras, the WJ-ND300 meets security needs across a wide range of applications. *Firmware upgrade available in 1st Quarter 2006 to support M

High Speed Throughput

WJ-ND300 is the latest fruit of Panasonic's relentless pursuit of higher network performance. Independent camera port and client PC port ensure high speed throughput for applications requiring high image quality, high frame rate and multi-channel capabilities.



Setup Couldn't Be Simpler

WJ-ND300 is equipped with a built-in Auto IP Setup feature that automatically assigns IP addresses to Panasonic's WV Series network cameras linked to the network. With no need to manually set each camera's IP address, getting your system up and running is easy.

MPEG4*/JPEG Compatible

This disk recorder can be used with either MPEG4* or JPEG cameras or in systems combining both. This flexibility allows systems to be tailored precisely to user needs using various combinations of cameras.

*Firmware upgrade available in 1st Quarter 2006 to support MPEG4.

RAID5 Built-In

The Optional RAID5 Board ; WJ-NDB301 enables high-level risk management by adding RAID5 capability to the WJ-ND300 itself.



System Integration with WJ-HD300A Series

Optional Management PC Software WV-AS65 permits simultaneous use of up to 100 WJ-ND300 and WJ-HD300A Series Digital Disk Recorders. By making it easy to construct hybrid systems incorporating existing analog equipment, it brings a new level of flexibility to surveillance and security management.



Management PC Software: WV-AS65



Network Disk Recorder
WJ-ND300

Usability is the key to a great interface

With your choice of eight languages (English, French, German, Italian, Spanish, Russian, Chinese, Japanese) and simultaneous access to each WJ-ND300 from up to eight clients.

Instinctive Operation

How simple is simple? Recorder and camera operations are just a click of a mouse away.

Main Screen Playback

Control Tab

Quick access to rich array of search parameters for images stored in the WJ-ND300. Allows you to list logs in many different ways to facilitate searches for detailed information.

Filtered Search

Use Time & Date, REC Events, Camera, or Text parameters to filter data.



Camera images can be displayed single screen or four-screen as the sequence.



Camera Select Tab

To see a live image, simply click on the camera of your choice. Tree-type displays make it easy to organize cameras by floor or in other ways.

On four-window screens, click on this button to enlarge the active window.



Camera Tab

Use your mouse to control Pan/Tilt, Zoom, and Preset networked camera features. Click on any point within the image to change camera direction.* (*Only when cameras are equipped with the features required.)

HDD Tab

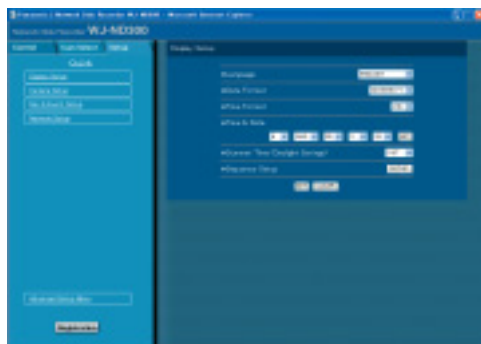
Simply click with the mouse to playback images stored in the WJ-ND300. Speed up playback up to 96 times or reverse frame sequence. Images can also be downloaded to a client PC.

Easy Setup

For quick and easy choose Quick Setup. To fine tune your settings choose Advanced Setup.

Quick Setup

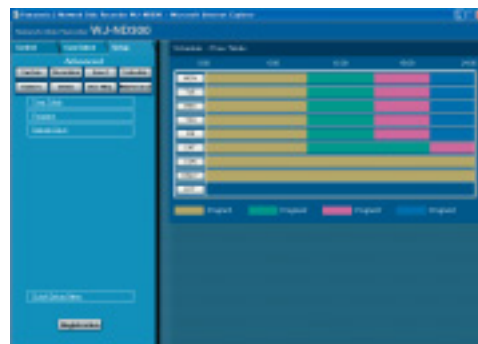
Display Setup, Camera Setup, Rec & Event Setup, and Network Setup: These four simple steps are all it takes to set up a basic system.



Example of simple screen showing basic functions.

Advanced Setup

System, Recording, Event, Schedule, Camera, Communication, User Management, and Maintenance steps allow you to fine tune your system. Frame rate can be specified for each camera.



It's even simple to create a recording schedule time table.

Measurement Function for Frame Rate Selection

After setting the WJ-ND300's monitoring and recording frame rate, click on the Measurement button to measure and display the frame rate for each camera. A red display signals that the frame rate selected has exceeded the available network bandwidth capacity.



Maintenance Port Located on the Front Panel

The maintenance port on the front panel of the WJ-ND300 makes it easy to connect the recorder to a PC.



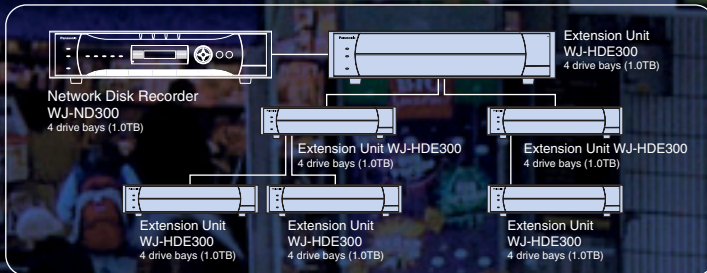
Outstanding scalability simplifies large system construction

Increase storage capacity, locate WJ-ND300 Network Disk Recorders in multiple locations, combine digital with analog systems. WJ-ND300 makes it so simple.

Extension Unit WJ-HDE300

For high-capacity systems with 7TB of storage

The WJ-HDE300 can be equipped with up to 4 disk drives. Systems can have up to 28 drives (one 4-drive WJ-ND300 Network Disk Recorder + six 4-drive WJ-HDE300 Extension Units), for a total of 28 x 250GB = 7TB of storage.



Management PC Software WV-AS65

For multi-location surveillance using up to 100 WJ-ND300 Recorders



- 1 Title Bar
- 2 Menu Bar
- 3 Tool Bar
- 4 FAVORITE Tab
- 5 RECORDER Tab
- 6 Image Display Area
- 7 Channel Search Buttons
- 8 Camera Control Panel
- 9 Recorder Control Panel
- 10 Status Bar

Network Mode

Remote control for multiple WJ-ND300 recorders via the network.

Display up to 16 channels at once

For live monitoring and playback, select a 1, 4, 9 or 16 window display. Drag and drop cameras from the Recorder & Camera Tree to the screen position of your choice.

Favorite Register

Register up to 500 frames and camera positions for instant access.

All-at-Once Search

Allows use of Filtered Search for images stored on multiple WJ-ND300 recorders.

Local Mode

Download images stored on multiple WJ-ND300 recorders to a client PC for Filtered Search, playback and management.

Two Download Types

Scheduled Download automatically downloads images at designated intervals. Manual Download is used for downloading live or playback images as needed.

Maintenance

Optimize PC hard disk space, erase all image files, or automatically delete files at specified intervals.

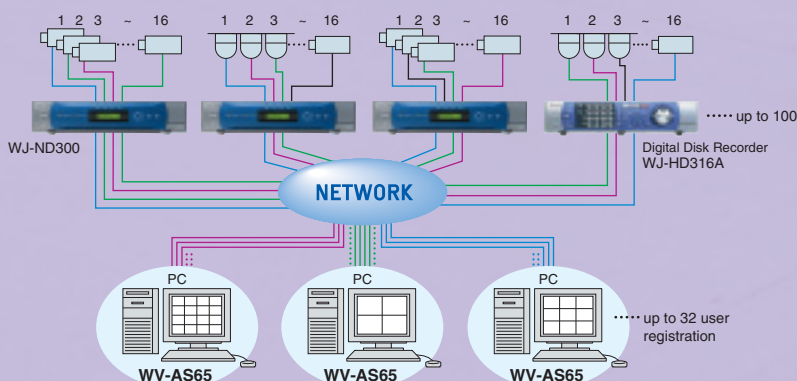
SPECIFICATIONS

WJ-ND300 Registration Capacity	up to 100 sets
User Registration Capacity	up to 32 users
User Types	5 types
Schedule Registration Capacity	up to 400 schedules
Favorite Registration Capacity	up to 500
Simultaneous Downloads	up to 10 accesses
Simultaneous Camera Image Displays	up to 16 cameras
Simultaneous File Playbacks	up to 4 files

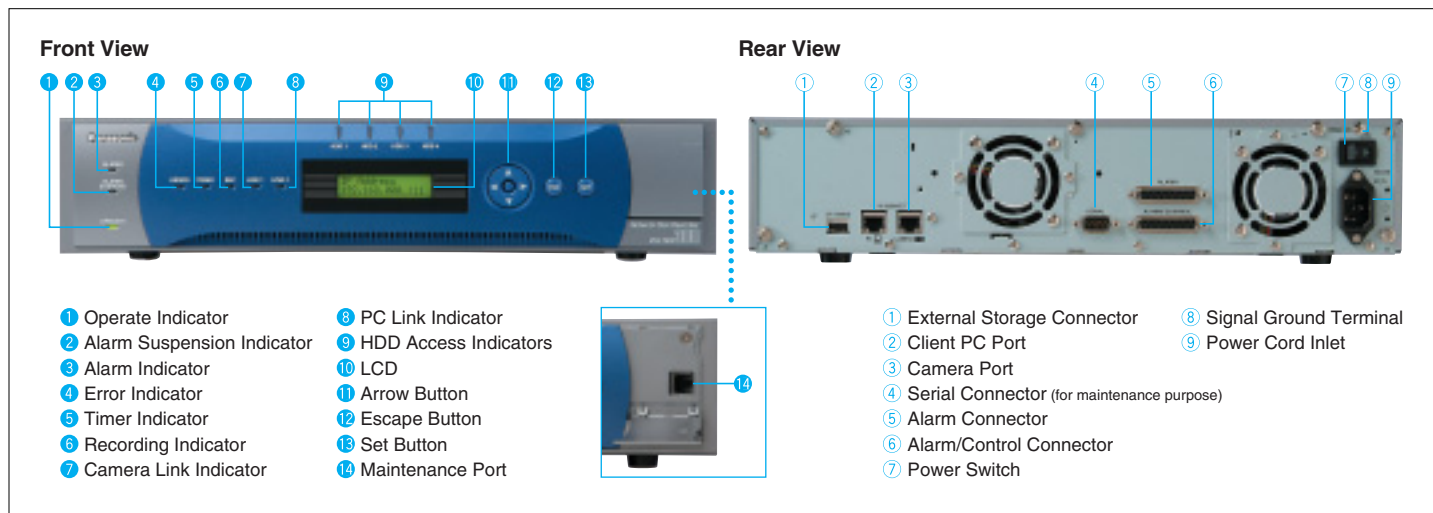
System Integration with WJ-HD300A Series

Up to a total of 100 WJ-ND300 and WJ-HD300A Series Digital Disk Recorders can be combined to create a hybrid system.

SYSTEM DIAGRAM



MAJOR OPERATING CONTROLS & TERMINALS



SPECIFICATIONS

General	
Power Source	120 V AC, 60 Hz
Power Consumption	85 W
Ambient Operating Temperature	+5 °C to +45 °C (41 °F - 113 °F)
Ambient Operating Humidity	Less than 85 %
Maximum Operating Altitude	2,000 m (610 feet) above sea level
Dimensions	420 mm (W) x 88 mm (H) x 350 mm (D) [16-9/16" (W) x 3-7/16" (H) x 13-3/4" (D)] (excluding rubber feet and projections)
Weight	8.3 kg (18.3 lbs.)
Input/Output	
External Storage	High-speed serial interface, 480 Mbps (theoretical value), x1
Alarm/Control Connector	Emergency recording input*1, alarm output for available disk space of the HDD copy/event recording area*2, HDD error output*2, camera error output*2, error output*2, power outage recovery completion output*1, time adjustment input/output*4, power outage detection input*1, external recording mode switching*1, alarm output 8-16*2, alarm suspension input*1, alarm reset input*1, network error input*2, +5 V output*5, (D-sub 25-pin)
Alarm Connector	Alarm input 1-16*1, Alarm output 1-7*2, (D-sub 25-pin)
SERIAL Connector	RS-232C, x1 (9-pin D-sub)
Camera Port/PC Port	10 Base-T/100 Base-TX (RJ-45)
Maintenance Port	10 Base-T (RJ-45)

*1: Non-voltage make contact, -100 mA, +5 V pull-up

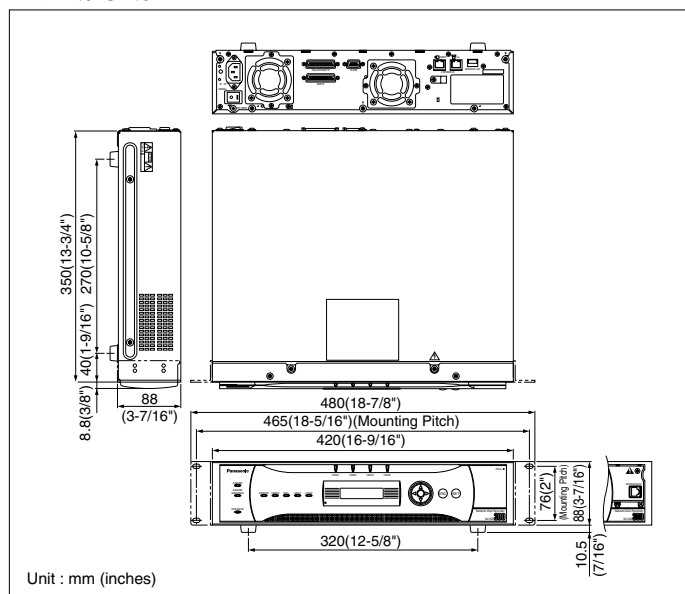
*2: Open collector output, 24 V max., 100 mA

*3: HIGH (+5 V ~ +12 V, 6.3 mA at maximum)

*4: 52 kΩ, 5 V pull-up, -100 mA/make contact

*5: 200 mA at maximum

DIMENSIONS



OPTIONAL COMPONENTS & ACCESSORIES

<p>Extension Unit WJ-HDE300 (4 drive bays for optional HDD units)</p> <p>RAID5 Board WJ-NDB301</p>	<p>Management PC Software WV-AS65</p>	<p>Mega Pixel Color Network Camera WV-NP1004</p> <ul style="list-style-type: none"> • MPEG4/JPEG output • 600 TV lines 	<p>Network Security Color Camera WV-NP244</p> <ul style="list-style-type: none"> • MPEG4/JPEG output • SD Memory card slot 	<p>Network Security Color Camera WV-NP472</p>	<p>Vandal Proof Network Color Dome Camera WV-NW474S</p>	<p>Network Color Dome Camera WV-NS324</p>	<p>Digital Disk Recorders WJ-HD300A Series</p> <ul style="list-style-type: none"> WJ-HD316A (16ch) WJ-HD309A (9ch)
--	--	---	---	--	--	--	---

Trademarks and registered trademarks: Microsoft, and Windows are registered trademarks of Microsoft Corporation in the U.S. and other countries.

Important – Safety Precaution: carefully read the operating instructions and installation manual before using this product.

– Panasonic can not be responsible for network performance and/or other manufacturer products that reside on the network.

• All TV pictures are simulated. • Weights and dimensions are approximate. • Specifications are subject to change without notice. • These products may be subject to export control regulations.

Panasonic

Panasonic System Solutions Company
Unit Company of Panasonic Corporation of North America

Security Systems

Website : www.panasonic.com/security

For Customer Support : call **1.877.733.3689**

Executive Office : Three Panasonic Way 2H-2, Secaucus, New Jersey 07094
Zone Office

Eastern : Three Panasonic Way, Secaucus, New Jersey 07094

Central : 1707 N.Randal Road, Elgin, IL 60123

Southern : 1225 Northbrook Parkway, Suwanee, GA 30024

Western : 6550 Katella Ave., Cypress, CA 90630

DISTRIBUTED BY:

PANASONIC CANADA INC.

5770 Ambler Drive, Mississauga, Ontario, L4W 2T3 Canada (905) 624-5010

PANASONIC PUERTO RICO INC.

DIVISION OF PANASONIC CORPORATION OF NORTH AMERICA

San Gabriel Industrial Park, 65th Infantry Ave. KM. 9.5 Carolina, P.R. 00985 (809) 750-4300

Printed in Japan

WJ-JHND300C(2P-534)